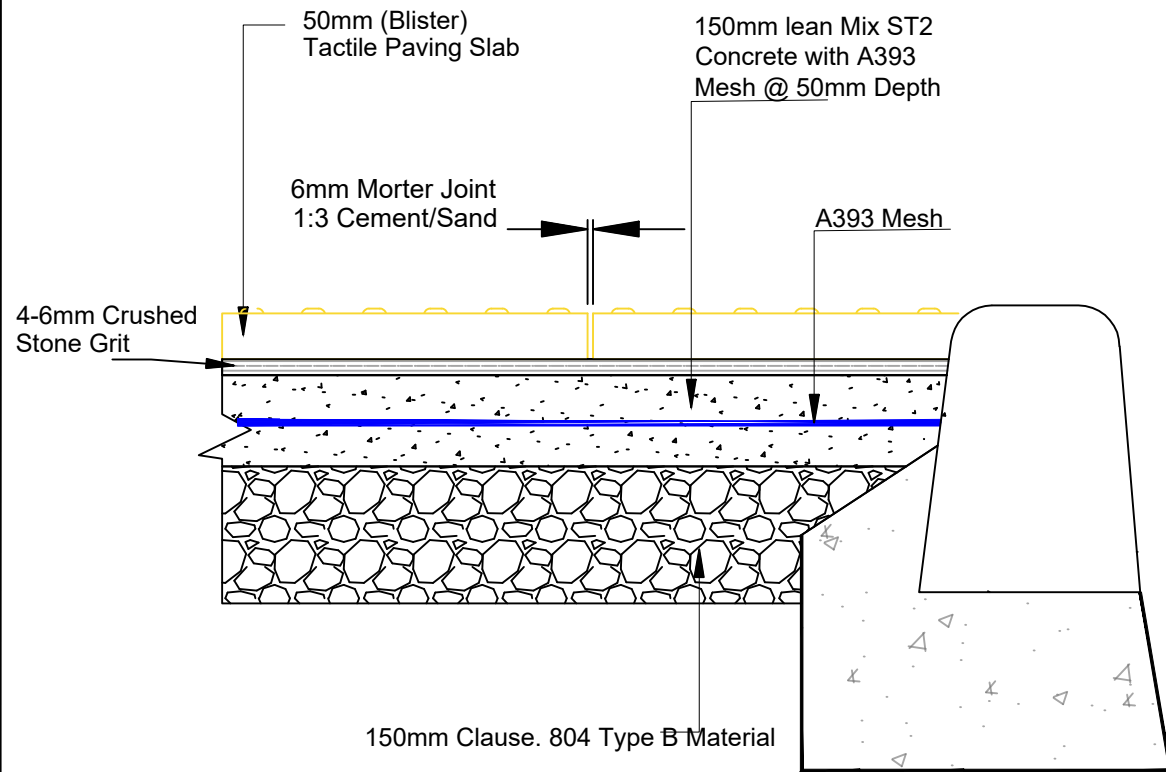
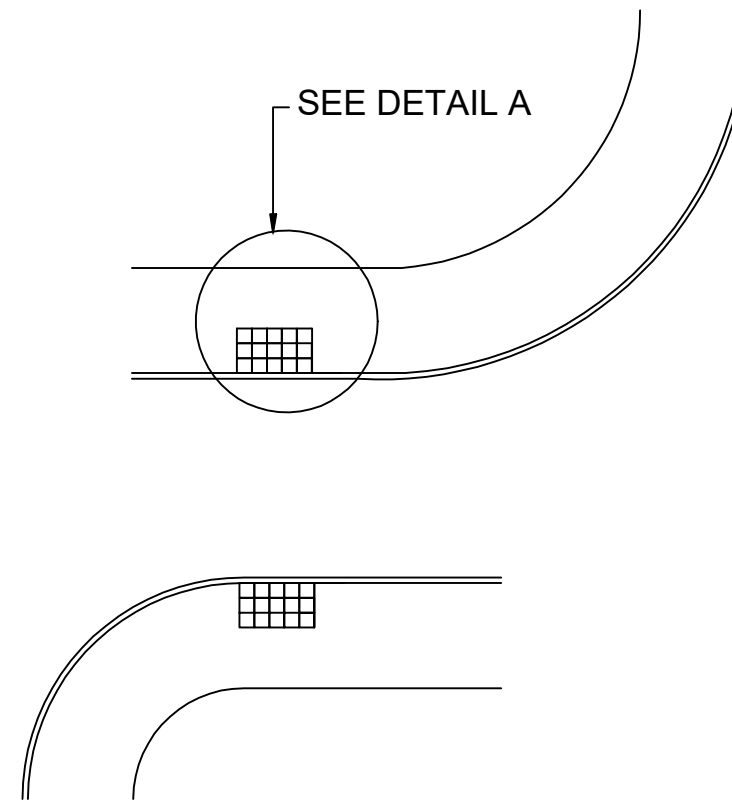


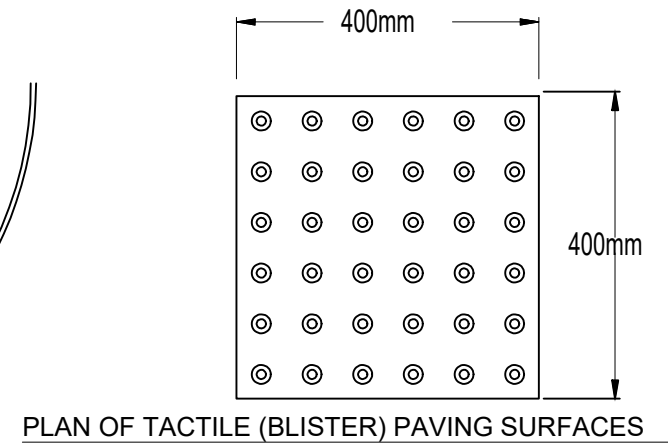
A3



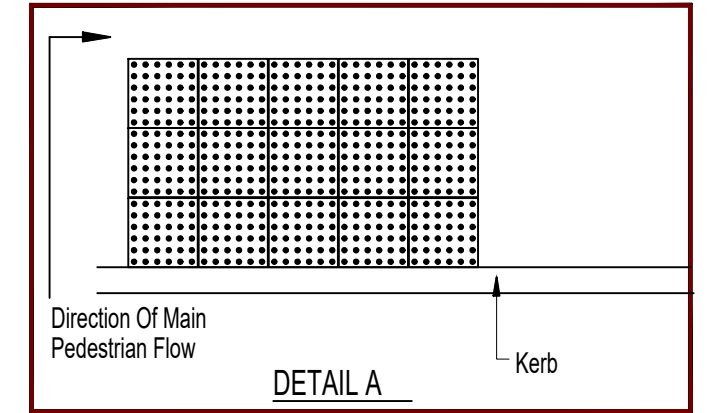
Section Trough Tactile Paving Slabs at Uncontrolled Pedestrian Crossings
Scale 1:10



LAYOUT OF TACTILE PAVING SLABS @ UNCONTROLLED PEDESTRIAN CROSSINGS



PLAN OF TACTILE (BLISTER) PAVING SURFACES

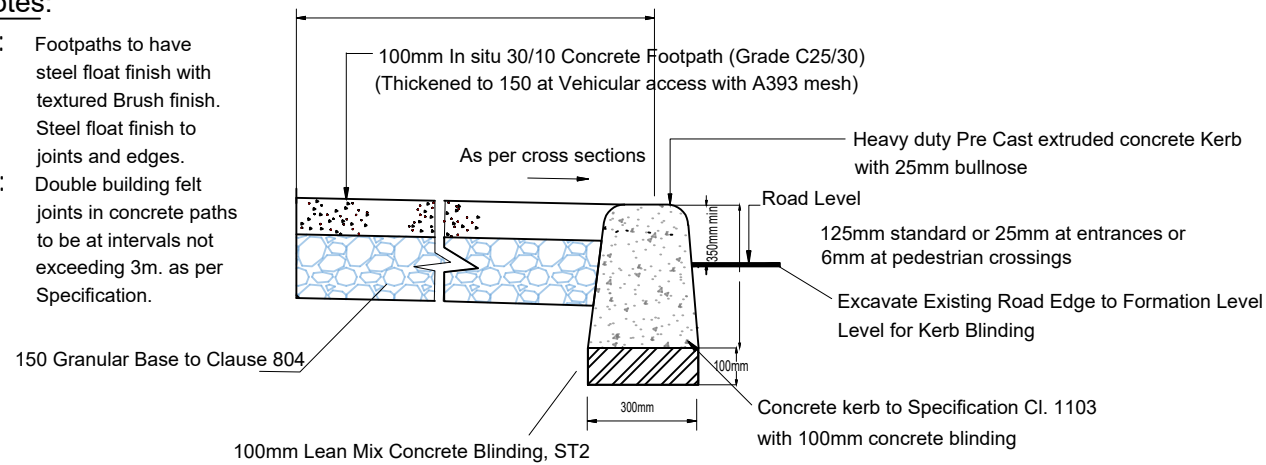


DETAIL A

Tactile Paving Detail Scale 1:10

Notes:

- 1: Footpaths to have steel float finish with textured Brush finish. Steel float finish to joints and edges.
- 2: Double building felt joints in concrete paths to be at intervals not exceeding 3m. as per Specification.



PRE-CAST CONCRETE KERB DETAIL
Scale 1:20

Revision	Detail	Date	Rev By
A	FOR SHD APPLICATION	14-02-22	PM

IMPORTANT TO READ
THIS DRAWING IS COPYRIGHT.

ALL CONSTRUCTION METHODS, MATERIALS, SERVICES AND INSTALLATIONS TO BE IN ACCORDANCE WITH ALL BUILDING REGULATIONS AND CODES OF PRACTICE AT TIME OF CONSTRUCTION.

ALL SUB-CONTRACTORS ARE ULTIMATELY RESPONSIBLE FOR ENSURING COMPLIANCE WITH REGULATIONS WITHIN THEIR OWN TRADE. ALL TRADES TO CHECK DIMENSIONS ON SITE PRIOR TO CONSTRUCTION OF FABRICATION. FIGURED DIMENSIONS TO BE TAKEN ONLY.

THE ENGINEER IS TO BE INFORMED IMMEDIATELY OF ANY DISCREPANCIES BEFORE WORK PROCEEDS.

IF IN DOUBT, ASK!



OLS Consulting Engineers & Project Management Ltd
No.3 Saint Patrick's Place,
New Road,
Bandon,
Co. Cork
P72 FK52
Tel: (023) 8843990
Email: info@olsconsultingengineers.ie
Web: www.olsconsultingengineers.ie

Client
EOIN SHEEHAN

Job Title
PROPOSED RESIDENTIAL DEVELOPMENT IN BLARNEY

Dwg. Title
DETAILS OF TACTILE PAVING & PRECAST CONCRETE KERB

Date	Drawn	Dwg No	Rev
01-02-21	PM	21017 - PL18	A
Scale	Checked		
AS SHOWN	PM		